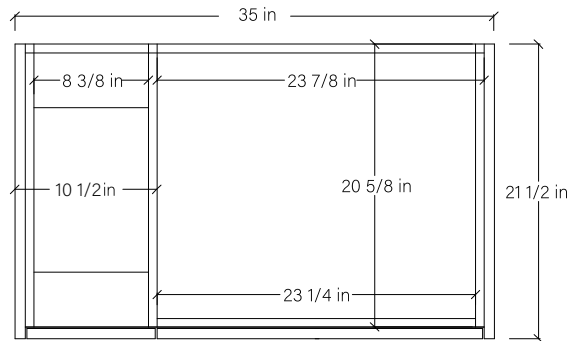
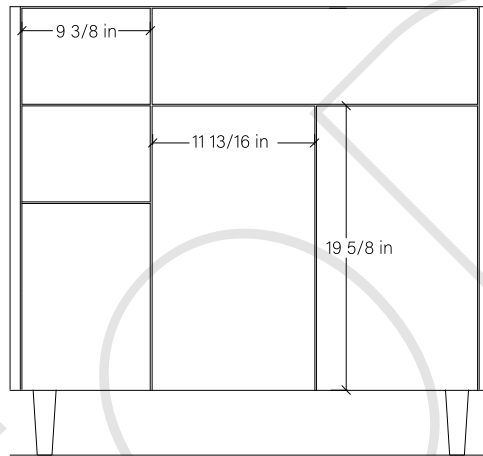


36" AUSTIN FREE STANDING VANITY RIGHT SINK

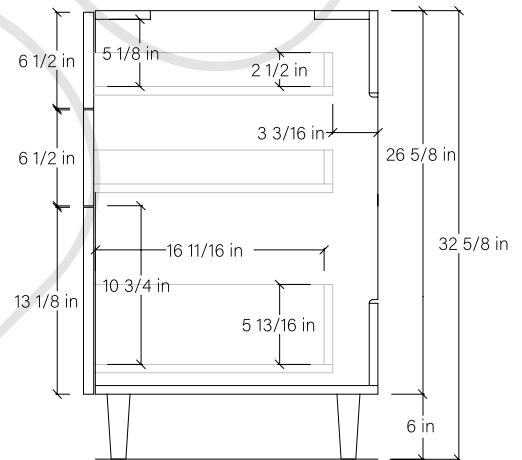
TOP VIEW



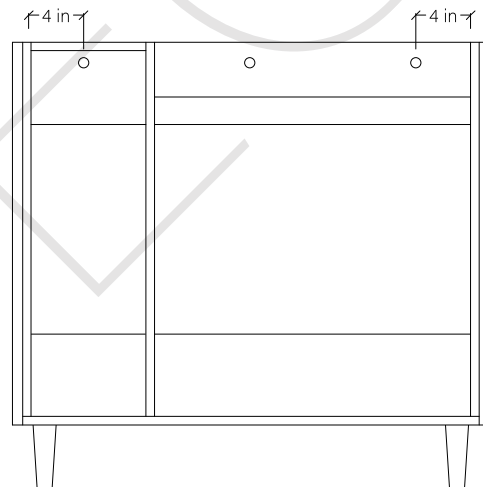
FRONT VIEW



SIDE VIEW



INSIDE BACK VIEW



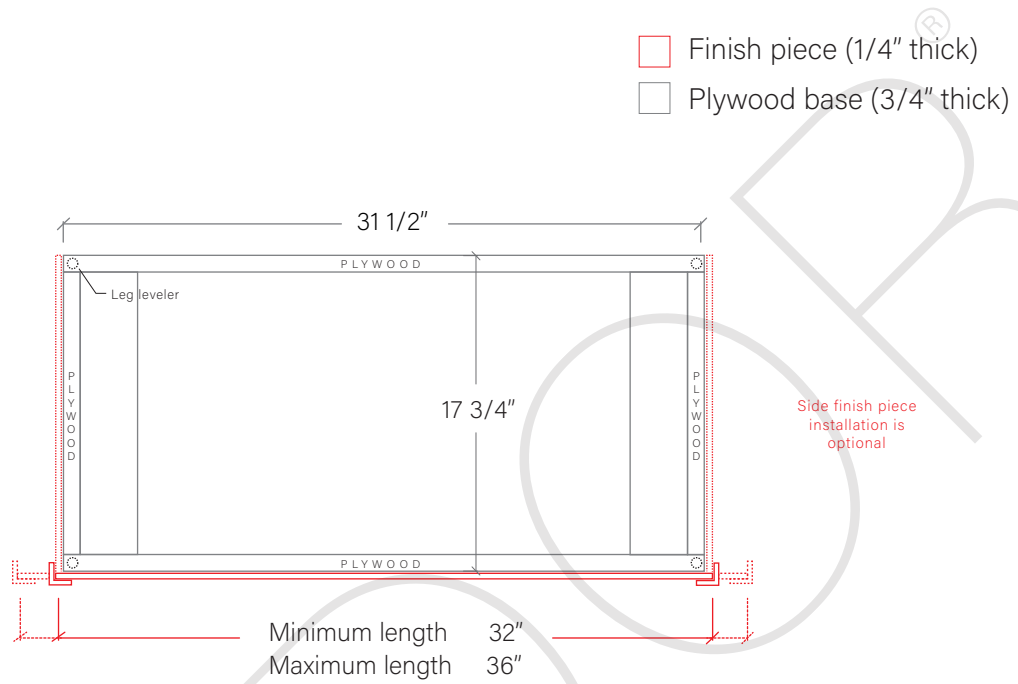
Secure vanity to studs within 4" from side gables.

TEODOR

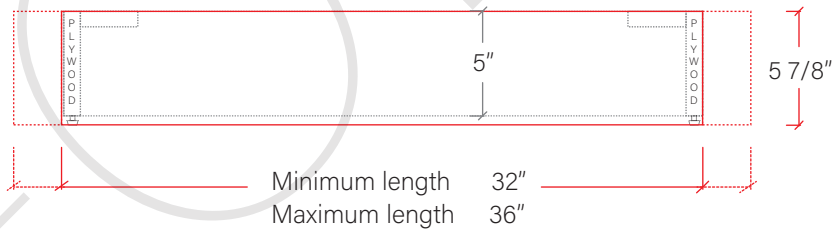
1-888-807-2323 | info@teodorvanities.com

36" TOE KICK

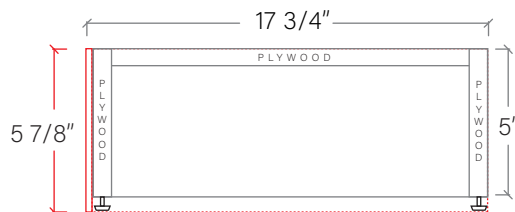
TOP VIEW



FRONT VIEW



SIDE VIEW



Leg levelers add 1/4" - 7/8"
to plywood base height

TEODOR

1-888-807-2323 | info@teodorvanities.com